

Recoveries and Recent Trends: An Educational Outlook

Peter Rupert
Department of Economics
The Laboratory for Aggregate Economics and Finance
Director, UCSB Economic Forecast Project
University of California, Santa Barbara

SBCC

April 7, 2011

outline

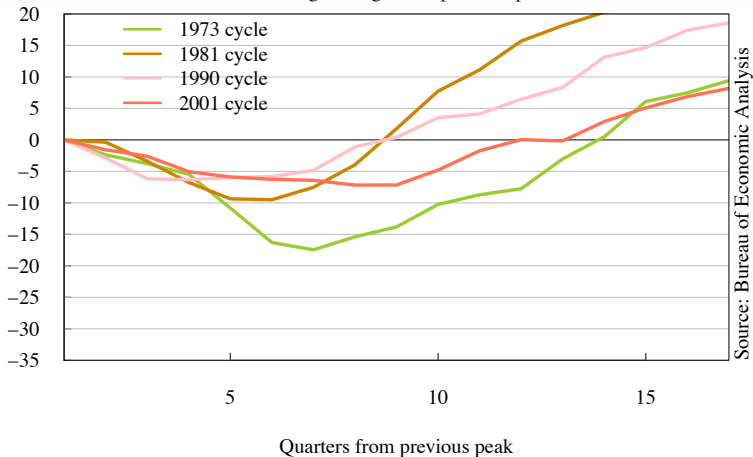
- data on the recession and recovery
- factors influencing the demand for education
- schooling data
- summary

current outlook

- businesses are not investing...

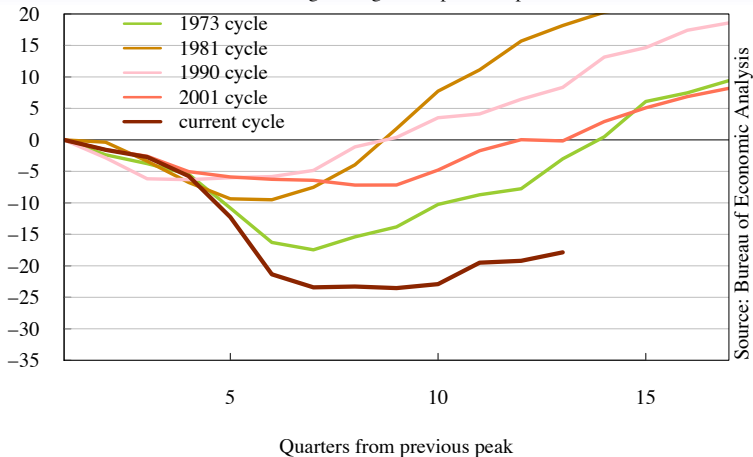
Fixed Investment

Percentage change from previous peak



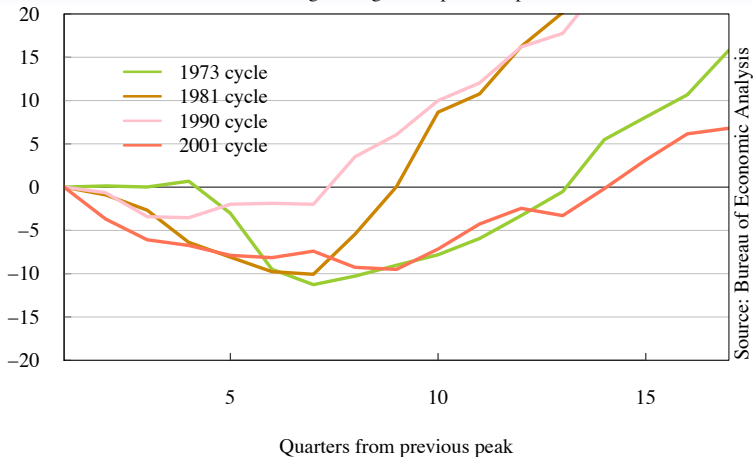
Fixed Investment

Percentage change from previous peak



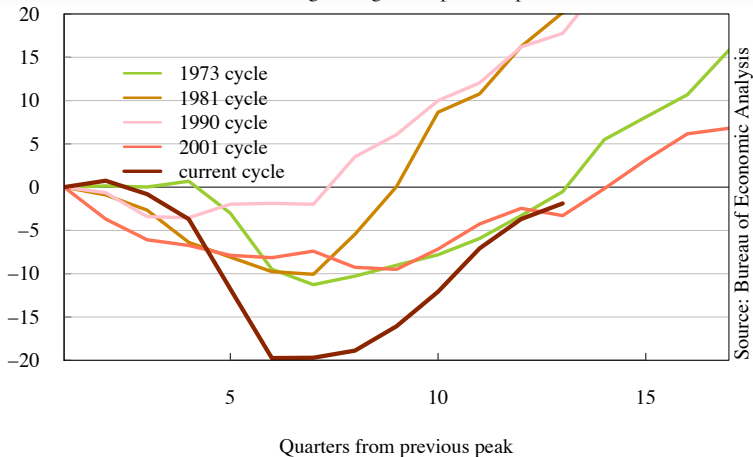
Equipment and Software Investment

Percentage change from previous peak



Equipment and Software Investment

Percentage change from previous peak



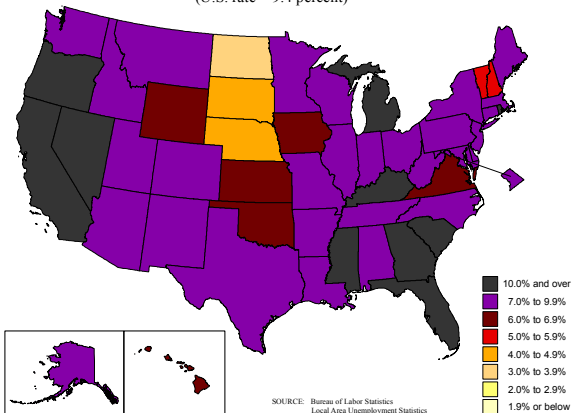
the labor market

- businesses are not hiring....

unemployment

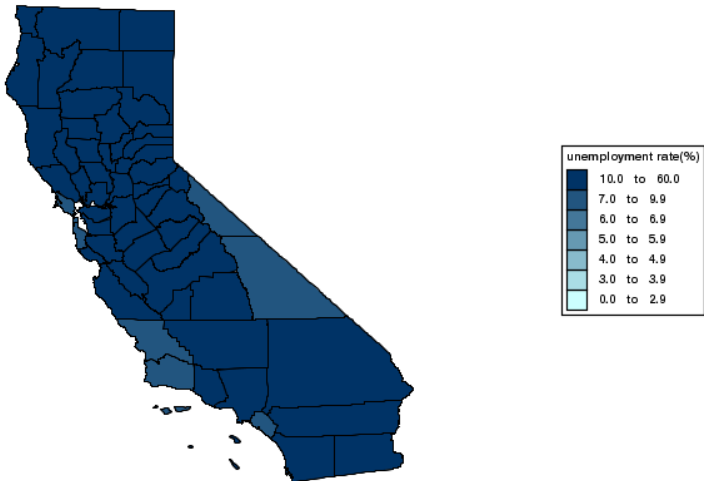
Unemployment rates by state, seasonally adjusted, December 2010

(U.S. rate = 9.4 percent)



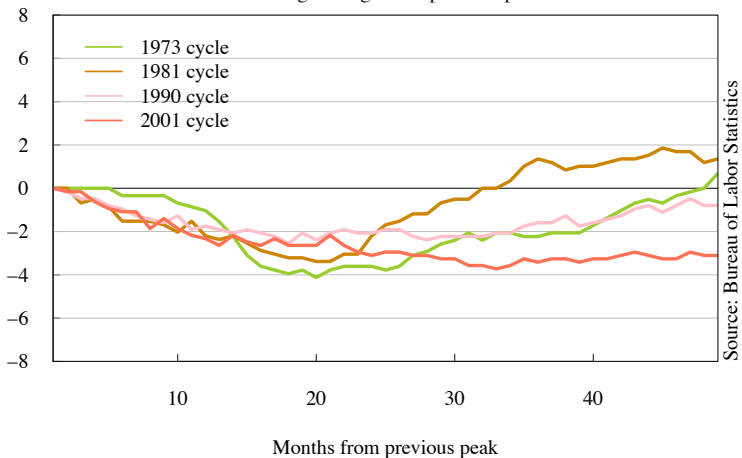
unemployment

Unemployment rates by county, not seasonally adjusted, California December 2010



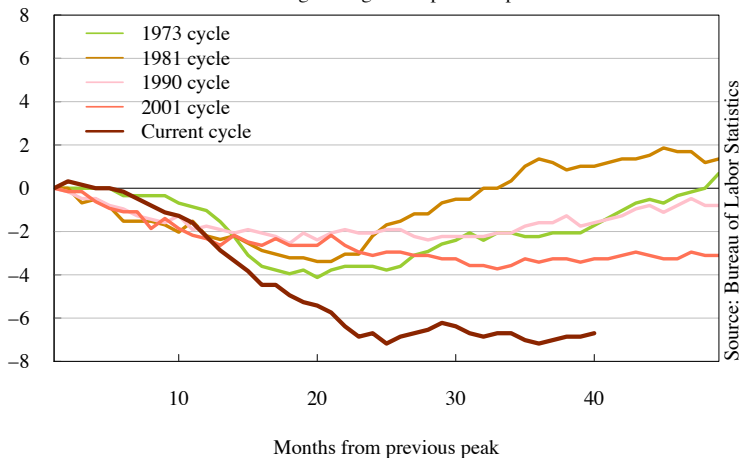
Employment to Population (above 16) Ratio

Percentage change from previous peak

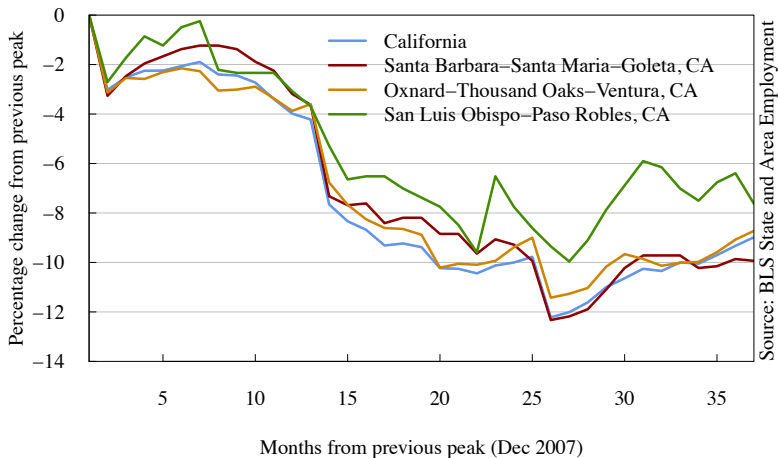


Employment to Population (above 16) Ratio

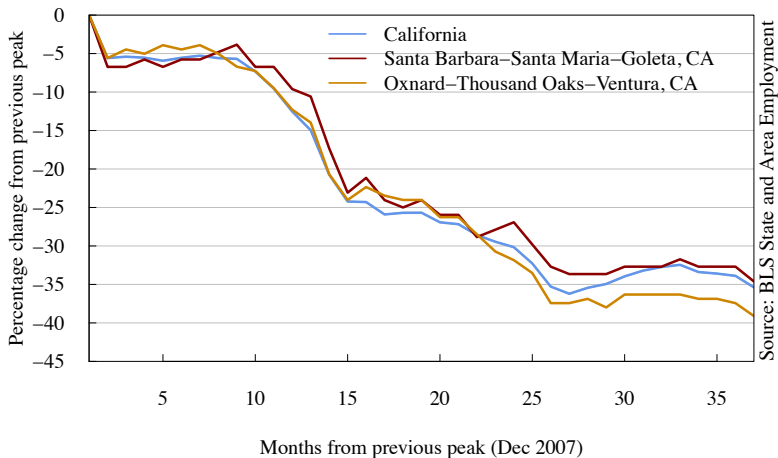
Percentage change from previous peak



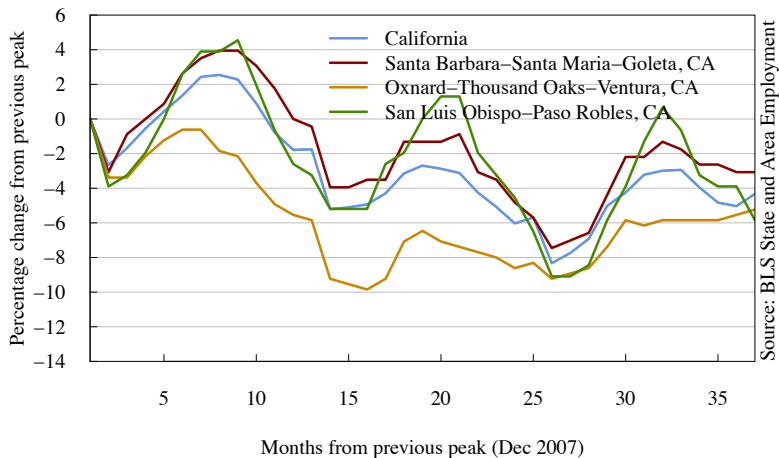
Employment, Total Private



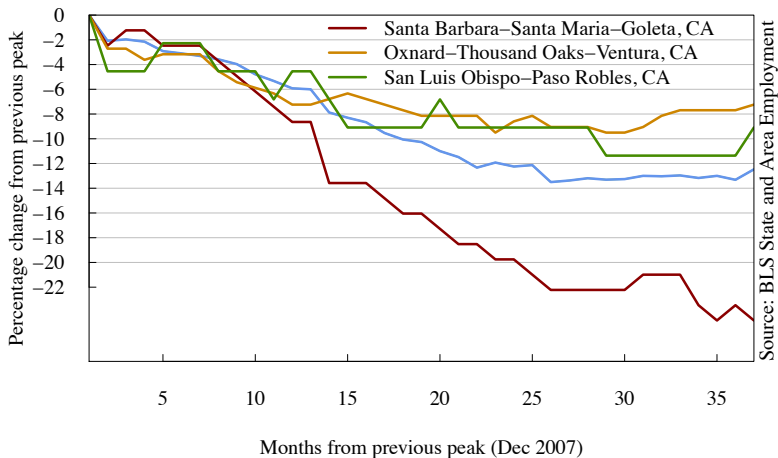
Employment, Construction



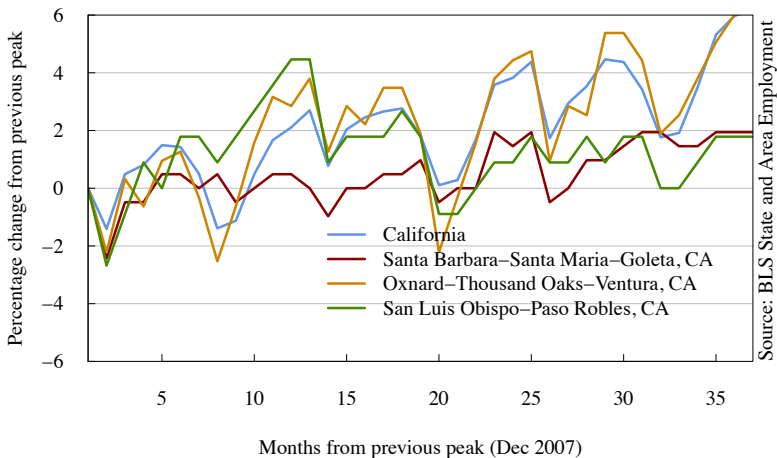
Employment, Leisure and Hospitality



Employment, Financial Activities



Employment, Education and Health Services



california housing facts

- you wanted affordable housing—you got it
 - may 2007: median price was \$591,180
 - december 2010: median price was \$301,850 (50% decline)
 - the problem is that 12.2% of the workforce is unemployed!
- there is a 12.7 month supply of houses over \$1 million

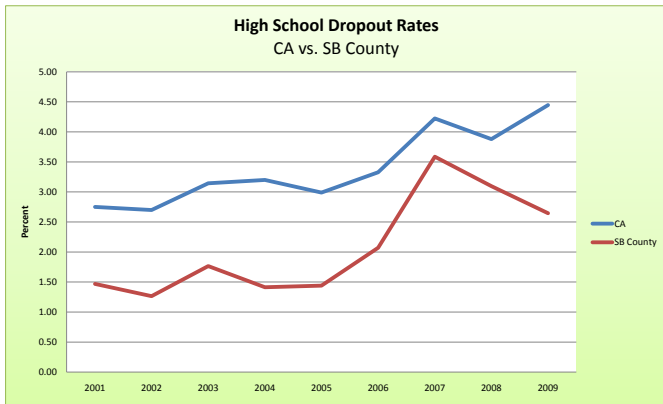
housing wealth

- large wealth declines
- university tuition out of reach?

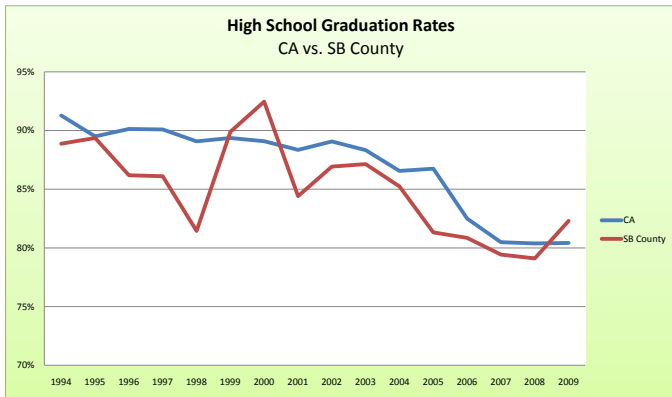
implication

- few job prospects
- wealth declines
- relatively cheap time to invest
 - expect high demand for SBCC
 - and high relative to university demand

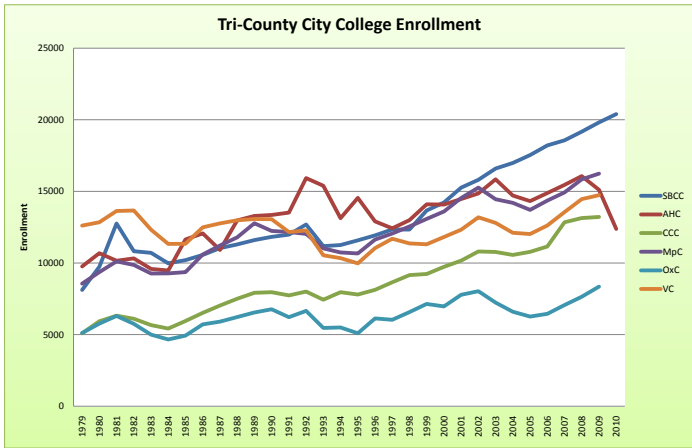
schooling trends



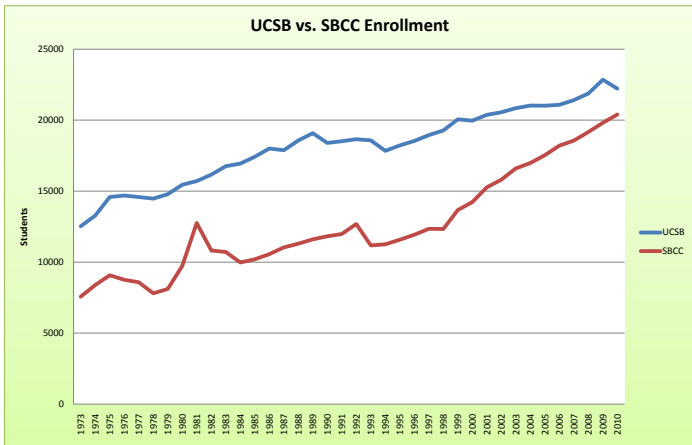
schooling trends



...schooling trends



...schooling trends



summary

- increasing demand for education
 - all levels, including online
 - relatively stronger than for university??